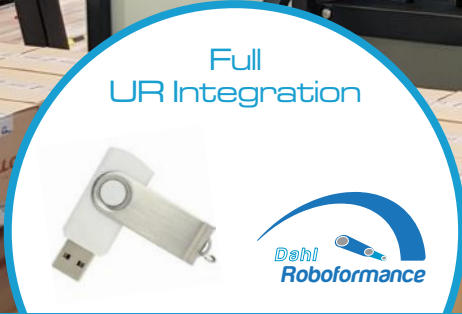
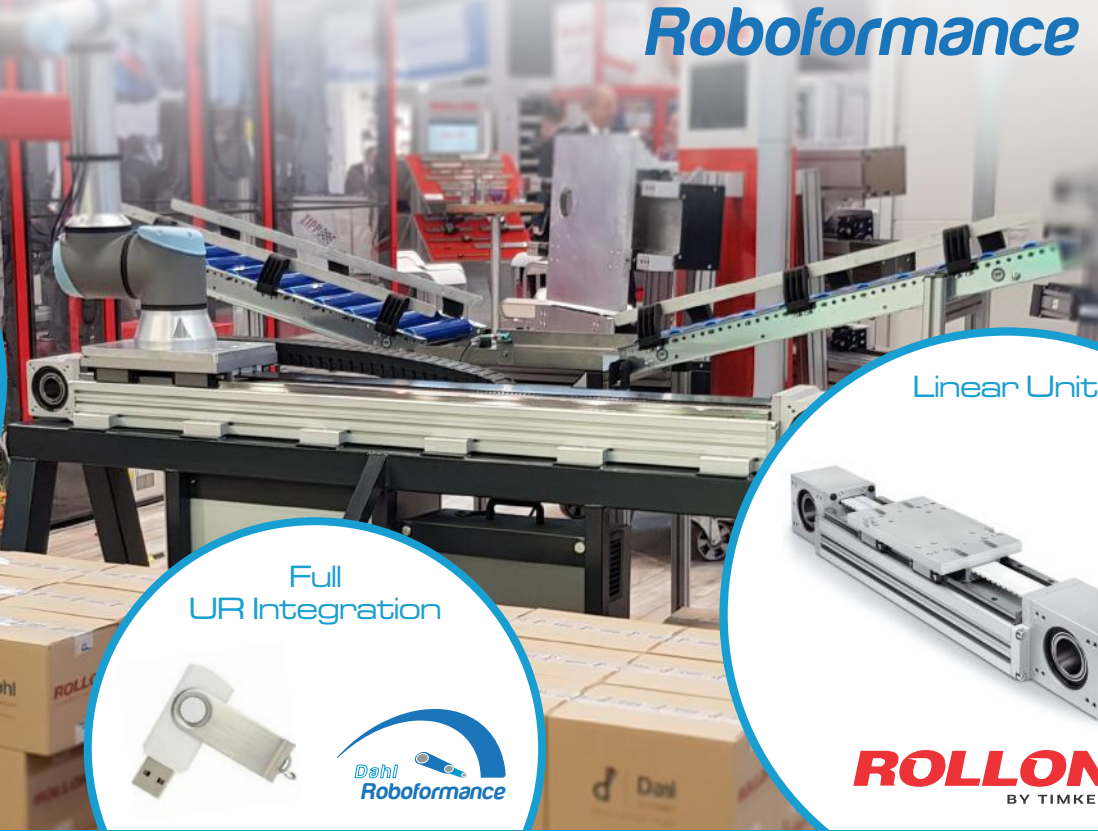




Dahl
Linear Move



Servo Amplifier



Full UR Integration



Linear Unit

ROLLON
BY TIMKEN

Maximum scope for all Universal Robots.
Horizontal or vertical. The integrated 7th axis in one package.

Our new Plug & Play solution

Palletizing / Depalletizing

Machine tending process

Combination of workplaces

Ready for use in just a few simple steps



Compatible with all UR e-Series types, required: Polyscope Vers. 5.1 or higher

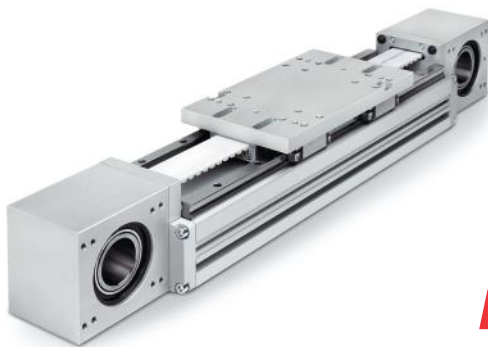
Overview components mechanics & control unit

Linear axle series *R-SMART**

Robot	Type	Drive
UR3	120 SP4	MP080
UR5	160 SP4	MP105
UR10	220 SP4	MP105
Frame size: 120 - 220 mm		Max. stroke length: 6.000 mm

Linear axle series *ROBOT**

Robot	Type	Drive
UR3	130 SP	MP080
UR5	160 SP	MP105
UR10	220 SP	MP105
Frame size: 130 - 220 mm		Max. stroke length: 6.000 mm



ROLLON
BY TIMKEN



Linear Unit *ROLLON R-SMART* or *ROBOT*

- ✓ High speed & high accelerations
- ✓ High load ratings
- ✓ Low wear / long lifespan
- ✓ Low-maintenance
- ✓ Low-noise

Switch cabinet with servo amplifier *B&R Acopos P3*

The 3-axis servo amplifier offers an output density of 4 ampere per liter required space and thus is one of the most efficient servo amplifiers with integrated safety functions on the market. Its scanning time is 50 µs minimally for the full controller cascade.*

Scope of Supply

- ✓ *Dahl Linear Move* Software & Operation Manual
- ✓ Linear Unit *ROLLON* series *R-SMART* or *ROBOT*
- ✓ Control with servo amplifier *B&R Acopos P3*

Reference

* For detailed technical specifications of the components used in this product please consider the spec sheets available from the two manufacturers.

Dahl Automation GmbH
D - 58540 Meinerzhagen
roboformance@dahl-automation.de

Partner of



As a certified system integrator we will be glad to support you with your complete system architecture. Ask for full advice - in respect of robots, peripheral devices, equipment options and spare parts supply!

Find our prices, general supply and guarantee terms online.