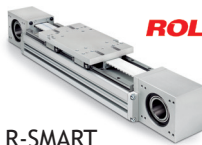
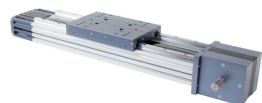


## 1 Mount your UR on the chosen Rollon linear axis!



R-SMART



ROBOT

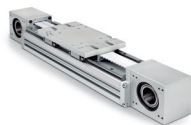
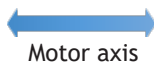
Delivered components:

1x Rollon linear unit R-SMART or ROBOT

1x Servo amplifier B&R Acopos P3

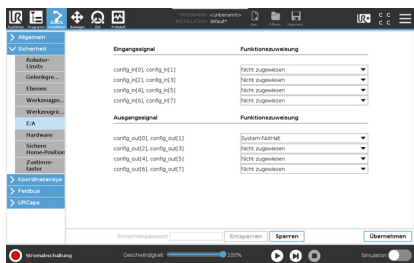
1x USB stick (contains URCap & User Manual)

## 2 Connect safety & LAN!



Configuration without external safety devices

## 3 Adjust the UR safety parameters!



## 4 Install URCaps (USB-Stick)!



**WARNING! Do not switch on the linear axis before checking the end switches (consult Product Operation Manual)!**

For further information please consult the Product Operation Manual on the USB stick.



**Caution! Please read the Operation Manual carefully before installing & using the Dahl Linear Move!**